

THE FRIARY SCHOOL

an Arts and Sports College



Options 2011—2013

Dear student

I am pleased to introduce your guide to Key Stage Four as you enter this next and very important phase of your education here at The Friary School.

As you will probably know, several subjects are compulsory. All students have to take the core subjects: English, Maths, Science, ICT, Physical Education and Religious Education. Citizenship, Personal, Social and Health Education will also be part of the curriculum.

Beyond this compulsory core, you have a wide range of choices available to you in the optional subjects, including some vocational courses which take place on different sites.

Arts and Sport are well represented amongst the options as our areas of specialism. Whatever your interests and talents, though, I am sure you will be able to make choices which allow you to play to your strengths and achieve the very best qualifications you possibly can in two years' time.

Read the booklet very carefully and pay close attention to the sections featuring the questions you should ask yourselves at this point in your education. Careers advice is readily available, but be reassured that your choices for Key Stage 4 will not close any doors for you.

Please note: A number of subjects here (e.g. Science, Maths, History, Geography,) involve some examinations in **Year 10** which count to your final grade. They tend to take place in May/June. Whilst holidays during term time are discouraged for any student, it is essential that any such plans do not interfere with these examinations. Please check the subject pages for more information.

On behalf of all the staff and governors, I wish you every success in Years 10 and 11 here at The Friary School.

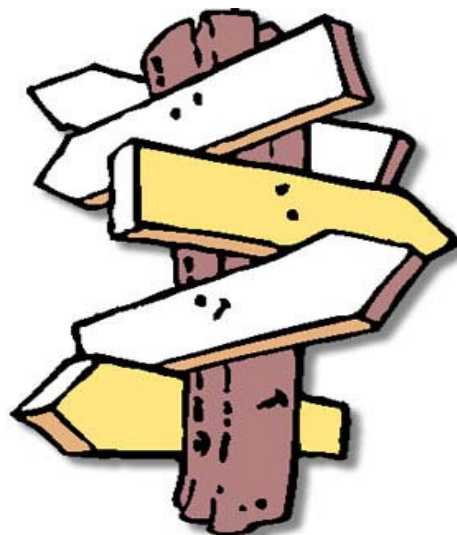
A handwritten signature in black ink, appearing to read 'D. Lister', written over a horizontal line.

D. Lister
Headteacher

Welcome to the Students' Guide to Key Stage 4 Courses 2011

In this booklet you will find:

- General information about school work at Key Stage 4, the types of courses available and advice about making the right choices
- Subject information in the form of course outlines
- Options form for completion by pupils and parents
- Options clinic form for specific questions from parents and pupils



What does the Key Stage 4 curriculum offer at The Friary School ?

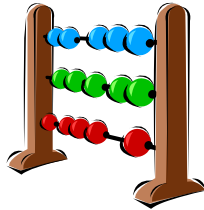
- A wide range of courses with different qualifications to suit pupil learning styles
- Progression routes from KS4 towards the Sixth Form and beyond
- Flexibility in the choice of courses giving opportunities for specialisation and encouraging breadth of study
- Continued opportunity for guidance and support

As well as developing and refining our own curriculum we work in partnership with other local schools in Lichfield and Burntwood, as well as South Staffordshire College. This enables us to offer a range of vocational courses to a number of our pupils. These types of courses will be studied at the college or the new Vocational Skills Centre in Burntwood.

Availability of these courses will depend on demand and access will be subject to an interview process.

The second half of this Guide will give details of the individual courses that we aim to have in place, ready for you in September 2011.

What will all students study?



You will follow a common curriculum to include:

- English
- Maths
- Science
- Religious Education
- Information & Communications Technology

... to examination level.



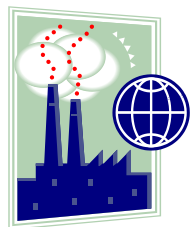
You will also have lessons in:

- Physical Education
- Information and Guidance sessions including Careers education
- Citizenship
- Personal, Social, Health and Economic Education (PSHE)

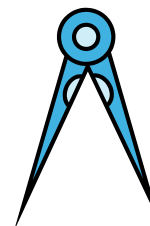


Where will students have a choice of study?

The subjects in the table below are offered at examination level. They will be grouped into option blocks (please refer to the Options form at the end of this booklet):



- Art and Design
- Business Studies
- Certificate of Personal Effectiveness
- Child Development
- Engineering
- French
- Geography
- Hairdressing and Beauty Therapy
- History
- ICT
- Multi Occupations: Construction (wood/trowel/painting and decorating)
- Music
- PE
- Performing Arts
- Psychology
- Spanish
- Sport
- Technology: Food
- Technology: Graphics
- Technology: Resistant Materials
- Technology: Textiles



Please note that it is not possible to study all combinations of subjects and that if there is insufficient demand for a subject it will be withdrawn.

Choosing the right options

This is an important and often difficult decision. Consider these points:

- ☺ Have you checked on exactly what is available? Read this guide very carefully.
- ☺ Look carefully at the options reply form at the end of the booklet - this will help you when considering combinations of subjects.
- ☺ What subjects do you like?
- ☺ What are you good at?
- ☺ Are you considering a certain choice of subject because you want to do it or because your friends want to do it?
- ☺ Have you considered restrictions on numbers in certain subjects?
- ☺ What level of study can you really cope with?
- ☺ Think about the learning style of the subjects that best suits you.
- ☺ What subjects do you need (for the future)?
- ☺ What can a particular course lead on to?
- ☺ Have you talked to all the right people?
- ☺ Think, read, ask and listen!



You will want your education to be relevant to life today and for your future study and work, but beware of misguided views about relevance. Subjects are not relevant because they *train* you for a particular job, but because they develop *skills* which are useful for a wide range of further study and careers in a changing world. In fact, nearly all subjects teach you how to find, sift, use and *evaluate information*; how to *plan projects, analyse problems and find solutions*; how to *present information* and arguments orally and on paper.

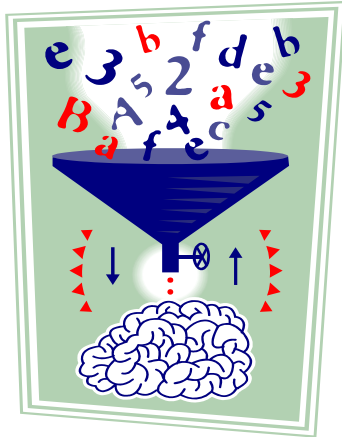
When you choose your courses don't just think of the subject content. Consider the skills you will be expected to develop and how you see their value. Many subjects, for example, develop your ability to use and *analyse information* and to *communicate* your own views in written and spoken form; others require you to be able to *solve problems* using mathematical, scientific, technical and IT methods.



So it is 'dangerous' to argue that a specific subject is relevant to a particular career.

Often pupils are influenced by friendship groups and go into a subject without considering their own personal ability to cope with such a subject. Please take care and make realistic choices! Likewise pupils are often influenced by past experiences in a subject. Remember this can be a fresh start.

What do you already know about your ability to help you make the right choices?

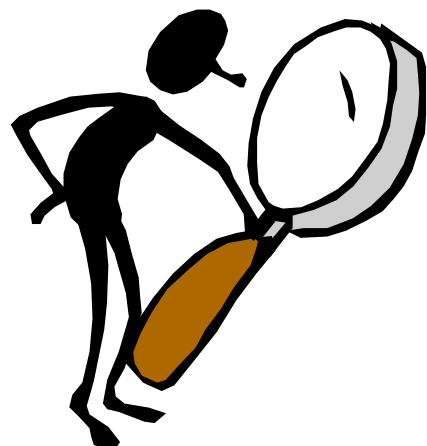


- During Year 9 you have been given an end of Key Stage 3 target level
- Your teachers have been marking your work against this target level
- You and your parents will receive information in your March profile report about your “currently working at level” i.e. your progress towards your end of year target

End of year targets are based on your performance at Key Stage 2 and your progress during years 7 and 8

You should look carefully at how your teachers have been assessing your work and at the advice you have been given about ways to improve your work.

You will need to be able to cope with the level of difficulty of each course so think carefully about the amount and type of controlled assessment work, project or folio work involved. You should also consider how a particular course matches your preferred learning style.



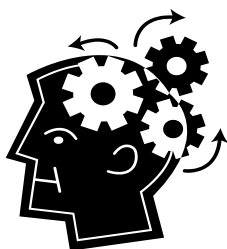
Read carefully the course content pages in the second half of this booklet.

What are GCSEs like and what grades are available?

- Grades **A*** - **G** are available in many subjects you may opt for, details in the course descriptions and on the Options Form
- You will be entered for a GCSE short course in **Religious Education** which will count as $\frac{1}{2}$ a GCSE qualification
- There may be levels of entry in a subject: **Foundation** or **Higher** - depending on the ability you demonstrate during the course
- The level of entry will determine the range of grades available: usually, a **Higher** entry level will result in grades **A*** to **D** and **Foundation** entry will result in grades **C** to **G**
- All courses will involve a **controlled assessment** component - the complexity and amount will be explained in the individual course content sheets in the second half of this booklet and by Subject Leaders
- Some courses will be examined **via modular assessment** throughout the course as well as by an end of course examination - see individual course content sheets for further information
- It is important to note that some modular courses will require **external examinations throughout the course**, especially at the end of **Year 10**: the dates for these examinations are externally set and **parents and students** must make sure that they will be **available to take these examinations**

GCSEs in a word?

Challenging!



Look carefully at your targets and current progress to indicate your suitability for particular courses.

See the individual course outlines later in this guide for more information. Full information can be obtained by visiting the web-sites given on page 9.

Be sure to study carefully all the information about individual courses. Ask your subject teachers questions about your suitability for a particular course or the subject leaders.

What are BTECs like and what grades are available?

- Courses will be graded **Pass, Merit, or Distinction and Distinction*** for the BTEC courses. These grades are **equivalent to GCSEs at grade A* - C**
- These courses are more **practically based**
- Marks are gained for **controlled assessment assignments** (your portfolio) and the ability to demonstrate skills acquired
- Some of the work links in with **careers and the world of employment**
- As the courses are assessed on the work students produce in school, absence, for example through **holidays in term time**, can have a **negative impact** on student achievement

BTECs in a word?

Stretching!



If you like to be judged on the quality of your coursework assignments, projects and practical work, these courses may suit you.

See the individual course outlines later in this guide for more information. Full information can be obtained by visiting the Edexcel web-site, address given on page 9.

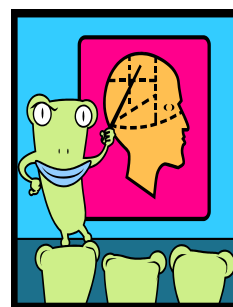
Be sure to study carefully all the information about individual courses. Ask your subject teachers questions about your suitability for a particular course or the subject leaders.

What are the other vocational courses and what qualifications are available?

- Modern courses designed to develop skills for future careers - a PASS certificate at this level is equivalent to GCSE grade C or better (Level 2)
- The majority of courses are offered in purpose-built specialist facilities
- Most marks are for controlled assessment assignments (your portfolio) and the ability to demonstrate skills acquired
- Some of the programme is about the world of work and job opportunities
- The availability of such courses will depend on demand
- To be admitted onto such courses, candidates will be expected to go through an interview process

Titles of vocational courses are (depending on availability and demand):

Engineering
Hairdressing and Beauty Therapy
Multi Occupations: Construction (wood/trowel/painting and decorating)



Individual course descriptions are available from Mr Hackfath.

The venue for Vocational courses is likely to be the Lichfield and Burntwood Vocational Centre (next to Chase Terrace Technology School in Burntwood).

If a student wishes to opt for a Vocational course, this will occupy two of the Option Block choices.

Students will be provided with transport to the place where their learning will take place, but must be flexible with the time they arrive at school and leave at the end of the day to accommodate the learning hours and transport needs.

Finding out more

- Discuss ideas with your Connexions Advisor (Mr Keen) in school
- Visit our Careers Library (located in the school library), to use computer programs "Fast Tomato" or "Kudos" or printed reference materials
- Discuss issues Mr Hackfath or Mrs Hearn
- Talk to your teachers about individual courses
- Ask your parents to come along to the Information Evening on Wednesday 9th March 2011 (7pm in the theatre)
- Ask your parents to fill in the Options Clinic Form by Friday 11th March 2011 if you have any specific questions
- Ask your parents to come to the Options Help Desk at the Year 9 Parents' Evening on Thursday 17th March 2011
- Use the Internet - useful web-sites are given below

These web sites may prove to be a very valuable source of information: search for Key Stage 4 or 14-19 information.

www.education.gov.uk (Department for Education)

www.qcda.org.uk (Qualifications and Curriculum Development Agency)

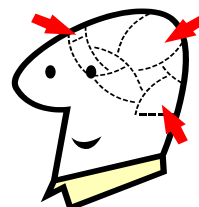
www.ocr.org.uk (Exam Board - Awarding Body)

www.edexcel.com (Exam Board - Awarding Body)

www.aqa.org.uk (Exam Board - Awarding Body)

www.wjec.co.uk (Exam Board - Awarding Body)

www.cegnet.co.uk (Access to The National Choices Publications 2010-2011
'Which way now?' and 'It's your future')



Some important events to ensure the options process works for you!

- ☺ Talk to all Year 9 pupils - week beginning Monday 7th February 2011 - complete the provisional practice options form

Mr Hackfath and Mrs Hearn will talk to all Year 9 students and explain options procedures. At the same time, all Year 9 students will have the opportunity to complete a practice form. This helps pupils to get a feel for the process and helps us to assess demand in certain subject areas.

- ☺ Attend interviews with senior members of staff during the week beginning 21st March

All students will be interviewed by a member of the School Leadership Team to discuss option choices.

- ☺ Information Evening for parents - 7.00pm, Wednesday 9th March 2011

Parents will have the opportunity to attend an Information Evening presented by members of the School Leadership Team

- ☺ Year 9 Parents' Evening and "help desk" - 4.30pm, Thursday 17th March 2011

We will hold the annual Year 9 Parents' Evening during which parents will be able to discuss pupil progress with individual subject teachers. Senior members of staff will be available to answer individual questions at the Options Help Desk if there are any outstanding questions you may still have

- ☺ Deadline for your option form return - Friday 18th March 2011

Deadlines are extremely important. Pupils who do not meet the deadline for the return of the form run a greater risk of not getting their first choice subjects than those who return the form in time.

Some serious advice before making a decision

Take some time to study the information on the pages which follow. You will find information on the individual courses we are hoping to offer in September 2010. You will also find an options reply form indicating the combination of subjects available.

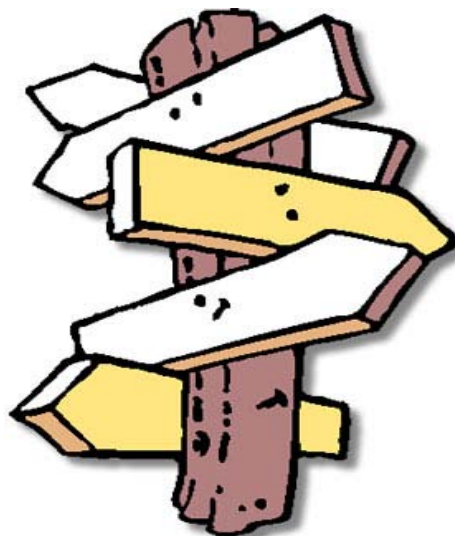


You will be given the opportunity to complete a "trial" options form. Please complete this "trial" form before you consider completing the final version. This "trial" form helps us to assess initial demand for courses and to plan further for September 2011.



The Government recently introduced the English Baccalaureate (EBac) as a performance indicator for schools and also as a certificate awarded to students who accomplish it. In order to achieve the EBac, students who are currently studying two modern foreign languages must continue with at least one language (French or Spanish) at Key Stage 4 - this was a condition of entry into dual language study in Year 8 and 9. These students must also opt for either History or Geography. Students will be able to study both languages and humanity subjects if they wish. Students who studied one modern foreign language in Years 8 and 9 will of course also be able to continue to study this at Key Stage Four, and take at least one Humanity subject and be able to achieve the EBac through such a combination of options.

It is essential that all pupils and parents understand that we cannot guarantee first choices made on the options form. Where a course is undersubscribed we may have to withdraw the offer of such a course. Equally we may have to ask pupils to reconsider their choices if a course proves to be oversubscribed and we are unable to increase staffing or rooming resources. Therefore please have a reserve choice available for each option block and be prepared to reconsider the choices you make.



GCSE ENGLISH & ENGLISH LITERATURE

During this course you have the opportunity to acquire qualifications in two separate subjects at GCSE - English Language and English Literature. Please note, controlled assessment takes place throughout Years 10 and 11, and pupils will sit an external GCSE Literature examination at the end of Year 10.

ENGLISH LANGUAGE

Spoken Language (30%)

You will be required to complete four tasks based on the following:

- Communicating and adapting language
- Interacting and Responding - Discussion focused activity
- Creating and sustaining roles - Drama focused activity
- Studying an aspect of spoken language

ENGLISH LANGUAGE

Literary reading and creative writing (30%) Controlled Assessment

- You will produce a sustained response about one literary text (15%)
- You will produce two creative writing pieces, one descriptive, one narrative (7.5% each)

ENGLISH LANGUAGE

Written Paper 1 (20%) 1 hour

- Studying written language - non fiction texts

Written Paper 2 (20%) 1 hour

- Using written language - information and ideas

ENGLISH LITERATURE

Written Paper 1 (35%) 2 hours

- Different Cultures Prose questions
- Unseen Poetry question

Written Paper 2 40% 2 hours

- Individual texts in context - Literary heritage/contemporary prose and drama.

Controlled assessment (25%)

- You will study a play by Shakespeare and a collection of poems.

The examination board for English and English Literature is WJEC. The levels of entry available to you in both subjects are:

- Foundation - at this level you could achieve GCSE grades G - C
- Higher - at this level you could achieve GCSE grades E - A*

The assessment for this subject will follow this pattern:

Type of assessment	% of total marks
--------------------	------------------

ENGLISH

Speaking and Listening	30
Non Fiction Reading and Writing	30
Written examination - Paper 1	20
Written examination - Paper 2	20

ENGLISH LITERATURE

Written examination Paper 1	35
Written examination Paper 2	40
Controlled Assessment	25

If you would like further information about this subject you should talk to:

Mrs S. Sullivan

(Subject Leader)

GCSE MATHEMATICS

During this course you will have the opportunity to:-

- Develop knowledge, skills and understanding of mathematical methods and concepts, including: Number; Algebra; Geometry; Measures; Statistics; Probability
- Use your knowledge and understanding to make connections between mathematical concepts
- Apply the functional elements of mathematics to solve real-life problems

During the course you will study the following topics:-

- Applying appropriate methods; communicating mathematics; reason, logic and proof
- Patterns and relationships; formulae, equations and inequalities; graphs of algebraic functions
- Measurement; 2-D and 3-D shapes; location; transformations
- Collecting, processing, representing and interpreting data; probability

You will be expected to complete homework relevant to your course of study on a weekly basis. Your homework will help you to build up knowledge and techniques essential for your successful examination performance.

During the course you will be taught in:-

- A setted teaching group

The examination board for this subject is:-

- *Edexcel*

The level of entry available to you in this subject are:-

- Foundation - at this level you could achieve GCSE grades G - C
- Higher - at this level you could achieve GCSE grades D - A*

The assessment for this subject will follow this pattern:-

Type of assessment	Numbers	% of total marks
In-course modules	2	60%
End of course module	1	40%

Use of a calculator is not allowed in module 2

Please note that modular examinations will be held in March of Year 10 and in November and June of Year 11

If you would like further information about this subject you should talk to:-

- Mr M. Douglas _____ (Subject Leader)

SCIENCE

In Year 10:

Most of you will take GCSE Core Science. It helps young people make sense of the science they encounter in everyday life and appreciate what it can tell them about themselves, their environment and the universe.

Please note there are three exams (Biology, Chemistry and Physics) to take in the Summer of Y10 (June) to complete the Core Science GCSE.

Some pupils will be taking BTEC Science Qualifications starting in Y10

In Year 11

You will take the Additional Science examination. This is designed to stimulate young people to develop scientific ideas, with an emphasis on explanations and concepts. It prepares them for more advanced courses which may lead to further training as scientists and practitioners in fields such as medicine, pharmaceuticals or engineering. The highest achieving students in Y9 will be offered the opportunity to study three separate sciences. The Core and Additional exams form the foundation of

During the GCSE course you will study the following topics:-

- Biology - "Life Processes Living Things"
- Chemistry - "Materials and their Properties"
- Physics - "Energy, Electricity and Radiation"
- (More detailed information is given in your GCSE Science handbook)

During the course you will be expected to complete the following assignments/pieces of coursework:-

- Investigative Skills Assessment (one task in each science for Year 10 and one task in each science for Year 11)
- Practical Skills Assessment - a range of practical skills across all three sciences is assessed in both Year 10 and 11

These will all contribute to your final examination grade.

In addition you will be expected to complete homework relevant to your course of study on a weekly basis. Your homework will help you build up knowledge and techniques essential for your successful examination performance.

During the course you will be taught in:-

- Setted teaching groups based on ability in each of the separate areas of Physics, Chemistry and Biology

The examination board for this subject is:-

- AQA

The levels of entry available to you in this subject are:-

- Foundation - at this level you could achieve GCSE grades G - B
- Higher - at this level you could achieve GCSE grades C - A*

You will achieve separate GCSE grades for the Year 10 course and for the Year 11 course. The results are combined at the end of Year 11.

The assessment of this subject will follow this pattern:-

Type of assessment	Number	% of total marks
<u>Year 10</u>		
Written paper	3	75%
Investigative skills & practical skills assessment	1	25%
<u>Year 11</u>		
Written paper	3	75%
Investigative skills & practical skills assessment	1	25%

BTE Level 2 Extended Certificate/Diploma in Applied Science

During the BTEC course you will study the following topics:-

- Biological Systems
- Chemistry -Applications
- Physical Science Applications

BTEC Qualification

BTEC Science encourages development of scientific vocational skills. There are no external examinations, instead students build up a portfolio of 17 assignments. These are mainly investigative or practically based, and cover Biology, Chemistry and Physics topics.

A BTEC Level 2 Extended Certificate in science is equivalent to 2 GCSEs.

A BTEC Level 2 Diploma is equivalent to 4 GCSEs

There are 4 qualification grades:

Pass - equivalent to grade C's at GCSE

Merit - equivalent to grade B's at GCSE

Distinction - equivalent to grade A's at GCSE

Distinction* - equivalent to grade A*'s at GCSE

Progression

This qualification allows progression to Level 3 Study.

If you would like further information about this subject you should talk to:-

- Mr N. Carney _____ (Subject Leader)

GCSE INFORMATION AND COMMUNICATION TECHNOLOGY: Short Course

During this compulsory short course you will have the opportunity to:

- Study a range of ICT systems as used in homes, schools and in society
- Create an ICT solution using ICT applications

During the short course you will study the following topics:

- ICT in today's world
- Practical applications in ICT

During the short course you will be expected to complete the following:

- 20 hours of controlled assessment (up to 8 hours in research / preparation and up to 12 hours in producing the final outcome) - choose one task from a list provided by OCR and demonstrate practical ICT ability to manipulate and process data effectively and efficiently, and to present information in a format suitable for purpose and audience

In addition you will be expected to complete homework relevant to the short course on a weekly basis. Your homework will help you to build up knowledge and techniques essential for your successful examination performance.

During the short course you will be taught in:

- A setted teaching group, based on ability in Science

The examination board for this subject is:

- OCR

The levels of entry available to you in this subject are:

- One level of entry - you could achieve grades A* - G equivalent to ½ GCSE

The assessment for this subject will follow this pattern:

Type of assessment	Number	% of total mark
Written paper (1 hour)	1 unit	40%
Controlled assessment (20 hours)	1 unit	60%

If you would like further information about this subject you should talk to:

- Mr K Stanley _____ (Subject Leader for ICT)

GCSE INFORMATION AND COMMUNICATION TECHNOLOGY

During this optional course you will have the opportunity to:

- Study a range of ICT systems as used in homes, schools and in society
- Create an ICT solution using ICT applications
- Study a range of ICT systems in a business or organisational context
- Create a multimedia solution such as a multimedia presentation, a multimedia website, or a computer game

During the course you will study the following topics:

- ICT in today's world
- Practical applications in ICT
- ICT in context
- Creative use of ICT

During the course you will be expected to complete the following:

- 20 hours of controlled assessment (up to 8 hours in research / preparation and up to 12 hours in producing the final outcome) - choose one task from a list provided by OCR and demonstrate practical ICT ability to manipulate and process data effectively and efficiently, and to present information in a format suitable for purpose and audience
- 20 hours of controlled assessment (up to 8 hours in research / preparation and up to 12 hours in producing the final outcome) - create a multimedia solution to a given problem by creating and developing a multimedia solution with appropriate creative elements appropriate elements such as sound clips, video, animation, and graphics.

In addition you will be expected to complete homework relevant to your course of study on a weekly basis. Your homework will help you to build up knowledge and techniques essential for your successful examination performance.

During the short course you will be taught in:

- A mixed ability teaching group

The examination board for this subject is:

- OCR

The levels of entry available to you in this subject are:

- One level of entry - you could achieve GCSE grades A* - G

The assessment for this subject will follow this pattern:

Type of assessment	Number	% of total mark
Written paper (1 hour)	1 unit	20%
Controlled assessment (20 hours)	1 unit	30%
Written paper based on pre-release material (1 hour)	1 unit	20%
Controlled assessment (20 hours)	1 unit	30%

If you would like further information about this subject you should talk to:

- Mr K Stanley _____ (Subject Leader for ICT)
-

GCSE BUSINESS STUDIES

During this course you will have the opportunity to:-

- Deepen your understanding of the way in which businesses operate in a dynamic, changing and competitive environment
- Examine businesses from a range of stakeholders' perspectives
- Make use of interactive, hands-on learning style which will include group work, investigation and role play
- Make extensive use of ICT for research, analysis and presentation purposes
- Take part in educational visits to business enterprises as appropriate

During this course you will study the following topics:-

- Business Structure and Organisation - business organisations, internal organisation, communication
- Business Finance and Accounting - sources of finance, business plans, cash flow forecasts, profit and loss accounts, balance sheets
- The Business Environment - businesses and the economy
- The External Environment - opportunities and constraints, the effect of / on business decisions, the government, EU, global issues
- Human Resources - recruitment, selection, training, motivation, remuneration
- Production - methods, stock control, quality, technology, costs and break-even analysis, growth
- Marketing - market research, marketing mix

During the course you will be expected to complete the following assignment/piece of coursework:-

- One piece of coursework (controlled assessment) investigating the issues that have to be addressed when looking at the marketing strategies adopted by different sized companies.

In addition, you will be expected to complete homework relevant to your course study on a weekly basis. Your homework will help you to build up knowledge and techniques essential for your successful examination performance.

During the course you will be taught in:-

- A mixed ability teaching group/setting teaching group.

The examination board for this subject:-

- WJEC

The levels of entry available to you in this subject are:-

Assessment for GCSE Business Studies is untiered, ie: all components cater for the full range of ability and allow access to grades A*-G.

The assessment for this subject will follow this pattern:-

Type of assessment	Number	% of total marks
Controlled assessment	1	25%
End of course examination	1	75%

If you would like further information about this subject you should talk to:-

- Mrs J. Sherry/Mrs K Van Block _____ (Subject Leaders)

GCSE GEOGRAPHY

Is this course right for me?

Course studied: Edexcel GCSE Geography B : Evolving Planet

Do you want to:-

- Learn and understand the world that you live in?
- Develop skills that will help you with other subjects and in employment such as ICT, research, management and analysis?
- Complete practical work away from the classroom?
- Learn how to work in a team?
- Learn through investigating, not just listening and reading?

What will I learn?

Our world is always changing and this course is designed to give you the chance to learn about these changes through four different units:-

Unit 1: Dynamic Planet - focusing on the physical aspects of geography, earthquakes, atmosphere etc.

Unit 2: People and the Planet - focus on human geography, settlements, exploration and resources etc.

Unit 3: Making Geographical decisions - a specific topic is studied in detail, for example Antarctica. You will learn how to draw conclusions from the information you gain.

Unit 4: Researching Geography - carrying out field work and writing it up - but all the writing up will be done in class time.

How will I be assessed?

Higher and Foundation papers are available for all exams.

Unit 1: (25% of final grade) you will sit a resourced based exam, where you will have maps, photos and diagrams to help you answer the exam. The exam lasts one hour.

Unit 2: (25% of final grade) you will sit a resourced based exam, where you will have maps, photos and diagrams to help you answer the exam. The exam lasts one hour.

Unit 3: (25% of final grade) Making Geographical Decisions is based on pre-released resources in a colour booklet on a geographical issue or location. Your teacher goes through the booklet with you then you sit a one hour exam.

Unit 4: (25% of final grade) you complete a coursework task set by the exam board then you have 20 hours in class to write up your findings.

Please note that due to the modular nature of the course all students will be required to sit an exam during the summer of Year 10.

Do you want to know more?

Have a look at some issues and topics that modern geographers study by visiting the following sources:-

- The National Geographic Magazine website: www.nationalgeographic.com/index.html
- The BBC GCSE Bitesize website: www.bbc.co.uk/schools/gcsebitesize
- The WorldMapper website: www.worldmapper.org
- The Royal Geographical Society's Geography in the news website: www.geographyinthenews.rgs.org

If you would like further information about this subject you should talk to:-

- Mrs H Barratt _____ (Acting Subject Leader)

GCSE HISTORY Option 1

This is one of two History courses that the department is offering. In September those selected to run will be subject to demand and the learners that make up the class. Parents will be informed regarding which course their child would be following towards the end of the options process.

During this course you will have the opportunity to:-

- Develop a knowledge and understanding of a range of events in history which have shaped the world as it is today
- Actively engage in the process of historical enquiry to develop as independent and critical thinkers
- Develop your research skills using a variety of sources including primary and secondary; books, videos, images, architecture, historical sites and the internet
- Organise and communicate your historical knowledge in creative and different ways: presentations, displays, ICT including moviemaker, debate and discussion, role play, historical simulations, projects, extended writing etc.

During the course you will study the following topics:-

- **Germany c1919-45:** a depth study based on Hitler's rise to power, the Nazi's control of Germany and what the Nazi's rule meant for the German people and for groups such as the Jews?
- **Medicine Through Time:** a development study, which examines medicine and health over a long period of time, including the Prehistoric, Ancient (Egyptian, Greek, Roman), Medieval and Modern periods.
- **History Around Us:** an assessment based on a field trip to a historical site.

During the course you will be expected to complete the following pieces of coursework/teachers assessed assignments:-

- A controlled assessment based on evidence collected during a fieldtrip in the Summer term of Year 10 to either the WW1 battlefields in France or a Medieval Castle.

During the course you will be taught in:-

- Sets or mixed ability teaching groups depending on option group sizes.

The examination board for this subject is:-

- OCR

There is only one level of entry available to you in this subject

- Grades A* - G will be awarded

The assessment for this subject will follow this pattern:-

Type of assessment	Number	% of total marks
Controlled assessment in the Sept/Oct Y11	1	25%
External examination: Paper 1 in June of Y11	1	45%
External examination: Paper 2 in June of Y10	1	30%

If you would like further information about this subject you should talk to:-

- Mr P Calder _____ (Subject Leader)

GCSE HISTORY Option 2

This is one of two History courses that the department is offering. In September those selected to run will be subject to demand and the learners that make up the class. Parents will be informed regarding which course their child would be following towards the end of the options process.

During this course you will have the opportunity to:-

- Develop a knowledge and understanding of a range of events in history which have shaped the world as it is today
- Actively engage in the process of historical enquiry to develop as independent and critical thinkers
- Develop your research skills using a variety of sources including primary and secondary; books, videos, images, architecture, historical sites and the internet
- Organise and communicate your historical knowledge in creative and different ways: presentations, displays, ICT including moviemaker, debate and discussion, role play, historical simulations, projects, extended writing etc.

During the course you will study the following topics:-

- Raiders and Invaders: The British Isles c400 - c1100
- President Bush, the Crusades and 9/11?
- A Promised Land? The Great Migration 1916-1930
- A Study of a Society in Depth over a fifty year period

During the course you will be expected to complete the following pieces of coursework/teachers assessed assignments:-

- One piece of coursework in Year 10
- One piece of coursework and one teacher assessed assignment in Year 11

During the course you will be taught in:-

- Sets or mixed ability teaching groups depending on option group sizes.

The examination board for this subject is:-

- OCR

There is only one level of entry available to you in this subject

- Grades A* - G will be awarded

The assessment for this subject will follow this pattern:-

One external 4 hour exam where resources can be used for the "Raiders and Invaders" module - to be taken in the Spring Term of Year 10 and one piece of coursework - to be submitted in the Summer Term of Year 10. Both elements will count as a **half GCSE award at the end of Year 10 for every student.**

One piece of coursework and one teacher assessed assignment in Year 11 to count as a **full GCSE award at the end of Year 11.**

Type of assessment	Number	% of total marks
Coursework in the Autumn of Y10 & 11	2	50%
Teacher assessment in the Spring of Y11	1	25%
Controlled Assessment in June of Y10	1	25%

If you would like further information about this subject you should talk to:-

- Mr P Calder _____ (Subject Leader)

GCSE PSYCHOLOGY

What is Psychology?

- Psychology is a highly enjoyable and challenging subject which requires skills of evaluation and analysis throughout
- Psychology is the scientific study of behaviour and experience. Psychologists aim to explore questions about the way human beings, and sometimes animals, behave and how they experience the world around them
- Throughout the course you will be studying theories that are used to help explain human and animal behaviour and the kinds of research methods used to study them
- ***Given the nature of the subject, pupils will need to possess a high level of maturity, commitment and motivation. An interest in mathematics and science would be an advantage for studying psychology***

During this course you will have the opportunity to:-

- Study psychological theories, research, concepts, studies and methods
- Review important research in the core areas of psychology

During the course you are likely to cover the following topics:-

- Obedience
- Sex and gender
- Attachment
- Memory
- Abnormal behaviour
- Criminal behaviour
- The self
- Perception
- Non-verbal communication
- Cognitive development

During the course you will be taught in:-

- A mixed ability teaching group

The examination board for this subject is:-

- OCR

The levels of entry available to you in this subject are:-

- One level of entry for all students enabling you to come out with a GCSE up to grade A*

The assessment for this subject will follow this pattern:-

Type of assessment	Number	Length of exam	% of total marks
Written exam: Studies and Application 1	B541	80 mins	40%
Written exam: Studies and application 2	B542	80 mins	40%
Written exam: Research in Psychology	B543	60 mins	20%

NB: There is no coursework

NB: There will be an exam at the end of Year 10, January of Year 11 and June of year 11

If you would like further information about this subject you should talk to:-

- Mrs J. Tyler _____ (Subject Leader)

GCSE RELIGIOUS EDUCATION: Short Course

Some students will have the opportunity to study Full Course

During this course you will have the opportunity to:-

- Acquire and develop the knowledge and understanding of beliefs, values and traditions of religion
- Consider the influence of those beliefs, values and traditions
- Consider religious and non-religious responses to moral issues
- Identify, investigate and respond to fundamental questions of life raised by religious and human experiences

During the course you will study the following topics:-

- Whether or not there is a god
- The moral issues surrounding contraception, abortion and euthanasia
- Human rights and responsibilities, including issues of prejudice
- Religion in the media e.g. films and soap operas
- Whether or not there is life after death
- Marriage and the family
- The care of the environment, including creation

During the course you will be taught in:-

- Groups will be taught in sets

The examination board for this subject is:-

- EDEXCEL

There is one level of entry available to you in this subject

- Grades A*-G will be awarded

The assessment for this subject will follow this pattern:-

Type of Assessment	Number	% of total marks
End of course examination	1	100%

If you would like further information about this subject you should speak to:-

- Mrs T. Pether _____ (Subject Leader)

GCSE FRENCH/SPANISH

During these courses you will have the opportunity to:-

- Increase your ability and confidence to speak, understand, read and write in French/Spanish
- Study authentic written and spoken French/Spanish
- Develop a greater understanding of language structure and learn how to apply it effectively
- Apply to take part in the Staffordshire French exchange visit to The Limousin
- Apply to take part in a visit to Spain

During these courses you will study the following topics:-

- **Home and Local area:** life in the home; friends and relationships; local area; facilities and getting around
- **Health and Sport:** sport and healthy lifestyle and food and drink as aspects of culture and health
- **Leisure and Entertainment:** socialising; special occasions; festivals; TV; films and music
- **Travel and the Wider World:** holidays; exchanges; the environment and cultural and social issues
- **Education and Work:** school life in the UK; school life in France/Spain; work experience; future study; jobs and working abroad

During these courses you will be expected to complete the following written assessment which will contribute 30% to your final examination grade:-

- Pieces set on the topics you study through Year 10 and Year 11. A folder of your best two pieces must be presented for assessment in Year 11. N.B: you will need to use reference materials and dictionaries and must have your own personal dictionary

In addition you will be expected to complete homework relevant to your course of study on a weekly basis. Your homework will help you to build up knowledge and techniques essential for your successful examination performance.

During the course you will be taught in:-

- A setted teaching group

The examination board for this subject is:-

- OCR

The levels of entry available to you in each skill are:-

- Foundation - at this level you could achieve GCSE grades G - C
- Higher - at this level you could achieve GCSE grades D - A*

There are examination papers for Foundation and Higher Tier in listening and reading skills. You can take a combination of Foundation Tier and Higher Tier units to match your ability

The assessment for this subject will follow this pattern:-

Type of assessment	Number	% of total marks
Controlled assessment	2 pieces	30%
Final folder to be submitted in February of Year 11		
Speaking examination	2 tasks	30%
Listening examination (at end of course)	1	20%
Reading examination (at end of course)	1	20%

If you would like further information about this subject you should talk to:-

- Mrs C. Cain _____ (Subject Leader)

GCSE DESIGN AND TECHNOLOGY: Food Technology

This is one of three Food Courses that the department is offering. In September those selected to run will be subject to demand and the learners that make up the class. Parents will be informed regarding which course their child would be following towards the end of the options process.

During this course you will have the opportunity to:-

- Combine skills with knowledge and understanding in order to design and make quality products in quantity
- Analyse and evaluate products and processes
- Consider how past and present design and technology affects society
- Recognise the moral, cultural and environmental issues inherent in design and technology
- Take part in food competitions and educational visits to the Good Food Show and the Royal Show
- Develop and generate evidence of key skills
- Take part in British Food promotion events

During the course you will study the following topics:-

- Understand the functional properties of food
- Understand the nutritional properties of food
- The effects of combining different ingredients and the interaction of foods during preparation and cooking
- The importance of appropriate proportions on the structure, shape and volume of mixtures
- The effect of acids and alkalis
- Demonstrate competence in a range of practical food skills/methods/processes to produce quality outcomes
- The impact and effect of using a range of different equipment to produce food items of quality and consistency

During the course you will be expected to complete the following assignments/pieces of coursework:-

- Short, focused practical tasks
- Design and make assignments
- A major coursework project

These will all contribute to your final examination grade.

In addition you will be expected to complete homework relevant to your course of study on a weekly basis. Your homework will help you to build up knowledge and techniques essential for your successful examination performance.

During the course you will be taught in:-

- A mixed ability teaching group

The examination board for this subject is:-

- AQA website: www.aqa.org.uk

The levels of entry available to you in this subject are:-

- One tier of entry to achieve GCSE grades A* - G

The assessment for this subject will follow this pattern:-

Type of assessment	Number	% of total mark
Controlled assessment (45 hours maximum) -via a Design and Make Project	1	60%
End of course examination	1	40%

If you would like further information about this subject you should talk to:-

- Mrs J Hales _____ (Subject Leader)

GCSE HOME ECONOMICS: Food and Nutrition

This is one of three Food Courses that the department is offering. In September those selected to run will be subject to demand and the learners that make up the class. Parents will be informed regarding which course their child would be following towards the end of the options process.

This is a new course that would appeal to students who enjoy the **practical aspects** of Food Technology and provides an opportunity to **study the nutritional aspects** of food. Candidates will develop and demonstrate their food preparation skill through **practical activities**, whilst **applying relevant knowledge and understanding** of four areas of study.

During this course you will have the **opportunity to:-**

- Develop your critical thinking and to manage resources.
- To develop food items which are suited to the needs of individuals and families.
- To recognise the influence of current trends, the market economy and technological change upon individual food choice.
- To develop a range of food practical skills that could be used in a range of context.

During the course you will focus on the **following areas of study:**

- Nutrition, Diet and Health throughout Life.
- Factors Affecting Consumer Choice of Food Products.
- Nutritional, Physical, Chemical and Sensory Properties of Foods in Storage, Preparation and Cooking.
- Food Hygiene and Safety.

During the course you will be taught in:-

- A mixed ability teaching group

The examination board for this subject is:-

- AQA

The levels of entry available to you in this subject are:-

- One tier of entry to achieve GCSE grades A* - G

The assessment for this subject will follow this pattern:-

Type of assessment	% of total mark
Task One Controlled Assessment (10 hours maximum) To be completed in Year 10	20%
Task Two Controlled Assessment (20 hours maximum) To be completed in Year 11	40%
End of Course Examination: Principles of Food and Nutrition.	40%

If you would like further information about this subject you should talk to:-

- Mrs J Hales _____ (Subject Leader)

BTEC Home Cooking Skills

This is one of three Food Courses that the department is offering. In September those selected to run will be subject to demand and the learners that make up the class. Parents will be informed regarding which course their child would be following towards the end of the options process.

During this course you will have the opportunity to:-

- This unit aims to give learners the knowledge, skills and confidence to enjoy cooking meals at home.
- Learners will gain understanding of how to economise when planning meals to cook at home.
- The unit will encourage learners to transfer skills learnt to other recipes to continue cooking for themselves and their families and to inspire others by passing on their knowledge.
- The unit is based on the chef Jamie Oliver's proposition that being able to cook is an essential

During the course you will study the following topics:-

The course consists of over 80 recipes, all divided into manageable sections and covering key topics from eggs and baking to vegetables and quick-cook meats. This is all supported by a range of fact sheets dealing with other basics and essentials such as:

- Kitchen basics: what equipment you need and the best way to stock your store cupboard, fridge and freezer
- Food safety and hygiene: knife safety, fridge management and rotation
- How to shop cleverly: shopping lists, seasonal food, planning ahead
- Ingredients: preparation, how to understand food labels

During the course you be assessed on the following tasks:

- Plan a nutritious two-course meal.
- Select and prepare ingredients for recipes for a nutritious, two-course meal
- Use cooking skills when following the recipes.
- Demonstrate food safety and hygiene throughout the preparation and cooking home.
- Explain ways to economise when cooking at home.
- Be able to pass on information about cooking meals at home from scratch.

The examination board for this subject is:- EDEXCEL

The levels of entry available to you in this subject are:- 6 Credits

The assessment for this subject will be mainly based on practical observations but there will be some written assessment.

If you would like further information about this subject you should talk to:-

- Mrs J Hales _____ (Subject Leader)

GCSE DESIGN AND TECHNOLOGY: Textile Technology

During this course you will have the opportunity to:-

- Design fabrics for your own products and enhance them with a range of decorative techniques
- Develop knowledge and understanding of the properties of fibres and how their characteristics influence the performance of fabrics in daily life
- Use industrial practices in the design, planning and production of high quality textile products
- Use a variety of appropriate tools and equipment to produce textile products, including CAD/CAM
- Develop practical skills through the production of textile products of both a functional and creative nature
- Take part in educational visits to develop an understanding of commercial textile products
- Develop and generate evidence of key skills

During the course you will study the following topics:-

- **Unit 1 - Introduction to designing and making.** You will be able to select from a range of Design and Make tasks. Carry out research, produce designs, create a protocol of your chosen item and evaluate the processes you have used. This is a controlled assessment unit.
- **Unit 2 - Sustainable design.** You will look at how Design and Technology has evolved through examination of products from the past and present. You will complete a number of mini-tasks.
- **Unit 3 - Making quality products.** You will be able to select from a range of Design and Make tasks. Plan, develop creative and original design ideas, produce a quality finished product and critically evaluate your work. This is a controlled assessment unit.
- **Unit 4 - Technical aspects of designing and making.** You will study fibres and fabrics, design, product planning, tool and equipment, processes, computer applications, health and safety and industrial production. Assessment for this unit is through an external examination.

During the course you will be expected to complete the following assignment/pieces of coursework:-

- Short, focused practical tasks
- Design and make assignments
- A major coursework project

These will all contribute to your final examination grade.

In addition you will be expected to complete homework relevant to your course of study on a weekly basis. Your homework will help to build up knowledge and techniques essential for your successful examination performance.

During the course you will be taught in:-

- A mixed ability teaching group

The examination board for this subject is:-

- AQA website: www.ocr.org.uk

The levels of entry available to you in this subject are:-

- One tier - at this level you could achieve GCSE grades G - A*

The assessment for this subject will follow this pattern:-

Type of assessment	Number	% of total marks
Controlled assessment	2 units	60%
End of course examination	2 units	40%

If you would like further information about this subject you should talk to:-

- Mrs G. Bennett _____ (Subject Teacher)

GCSE CHILD DEVELOPMENT

During this course you will have the opportunity to:-

- Acquire a body of knowledge and understanding of the overall needs of young children and their development
- Experience and develop skills of a practical nature relevant to the needs of babies and young children
- Develop an understanding and application of appropriate equipment available for babies and young children including toys, books and games
- Take part in educational visits to study the development of a child
- Use a range of ICT applications in all areas of the course
- Develop knowledge, skills and understanding of citizenship issues
- Take home the interactive baby for the weekend

During the course you will study the following topics:-

- **Parenthood** - The family, planning for a family, preparing for the birth, provision of a safe environment
- **Pregnancy** - Reproduction, pre-conceptual care, pregnancy, preparation for the birth, labour and birth, newborn baby, postnatal care
- **Diet, Health and Care of the Child** - A healthy diet, feeding a baby, weaning, feeding the young child, food related problems child care, child health
- **Development of the Child** - Development, physical development, intellectual development, social and emotional development, learning and play
- **Support for the Parent and Child** - Types of support available, child care provision

During the course you will be expected to complete the following assignments/pieces of coursework:-

- **A Child Study** - You must have access to a child under 5 years old by end of study. You will produce a Child Study using research, investigation and observational skills. It will involve approximately 20 hours of supervised work
- **Research Task** - A task to be chosen from a list provided by AQA based on parenthood, pregnancy, diet, health and care of the child, support for the parent and child. It should involve approximately 7 hours supervised work

During the course you will be taught in:-

- A mixed ability teaching group

The examination board for this subject is:-

- AQA (4582) website link: www.aqa.org.uk

The levels of entry available to you in this subject are:-

- One tier of entry - to achieve GCSE grades A* - G

The assessment for this subject will follow this pattern:-

Type of assessment	Number	% of total marks
Controlled assessments -		
Child Study (20 hours to complete)	1	40%
Research task (7 hours to complete)	1	20%
End of course examination	1	40%

If you would like further information about this subject you should talk to:-

- Mrs J Hales _____ (Subject Leader)

GCSE DESIGN AND TECHNOLOGY: Resistant Materials

During this course you will have the opportunity to:-

- Acquire a body of knowledge and understanding of resistant materials
- Experience and develop skills of a practical nature relevant to the solving of problems through designing, planning and making with resistant materials.
- Consider how design and technology affects the manufacturer, user and environment
- Develop an understanding of the safe application of appropriate tools, equipment and machinery
- Develop and generate evidence of key skills

During the course you will study the following topics:-

- Methods of designing, drawing, planning and making solutions to problems and including the use of CAD/CAM
- Resistant and new "smart" materials: their classification, working properties and uses
- Combining, processing and preparing materials for manufacture
- Social, cultural, moral and environmental issues related to the design and production of products
- Industrial and commercial products and the work of past and present designers
- Health and safety as both a designer, producer and consumer

During the course you will be expected to complete the following assignments/pieces of coursework:-

- Short, focused practical tasks
- Design and make assignments
- A major controlled assessment project

These will all contribute to your final examination grade.

In addition you will be expected to complete homework relevant to your course of study on a weekly basis. Your homework will help you to build up knowledge and techniques essential for your successful examination performance.

During the course you will be taught in:-

- A mixed ability teaching group

The examination board for this subject is:-

- AQA

The levels of entry available to you in this subject are:-

- One tier - at this level you could achieve GCSE grades G - A*

The assessment for this subject will follow this pattern:-

Type of assessment	Number	% of total marks
Controlled assessment	1	60%
End of the course examination	1	40%

If you would like further information about this subject you should talk to:-

- Miss A. Cartwright _____ (Subject Leader)

GCSE DESIGN AND TECHNOLOGY: Graphics Products

During this course you will have the opportunity to:-

- Acquire a body of knowledge and understanding of graphical communication systems
- Experience and develop skills of a practical nature, relevant to the solving of problems through the development of drawings and models
- Develop an understanding of the safe application and use of appropriate tools and equipment
- Evaluate the graphic outcomes of others and to consider their effects upon society and the environment
- Develop and generate evidence of key skills

During the course you will study the following topics:-

- Freehand, pictorial and 3D drawing techniques
- Methods of enhancing drawings and improving their presentation
- Production of working drawings
- Presentation of information data
- Lettering
- Use of developments/nets
- Modelling, using compliant materials
- Computer graphics, including CAD/CAM
- Product analysis and evaluation techniques
- Industrial applications, systems and control
- Social, cultural, moral and environment issues related to the design and production of products

During the course you will be expected to complete the following assignments/pieces of coursework:-

- Short, focused practical tasks
- Design and make assignments
- A major controlled assessment project

These will all contribute to your final examination grade.

In addition you will be expected to complete homework relevant to your course of study on a weekly basis. Your homework will help you to build up knowledge and techniques essential for your successful examination performance.

During the course you will be taught in:-

- A mixed ability teaching group

The examination board for this subject is:-

- AQA

The levels of entry available to you in this subject are:-

- One tier - at this level you could achieve GCSE grades G - A*

The assessment for this subject will follow this pattern:-

Type of assessment	Number	% of total marks
Controlled assessment	1	60%
End of the course examination	1	40%

If you would like further information about this subject you should talk to:-

- Miss A. Cartwright _____ (Subject Leader)

Certificate of Personal Effectiveness (CPE)

During this course you will have the opportunity to:-

- Work with others and improve your own learning and performance
- Take part in problem solving activities, discussions and oral presentations
- Plan and carry out research
- Take part in a variety of activities both in and out of school completing a range of practical, life enhancing and work related challenges. You will be responsible for planning, organising and carrying out these.

CPE enables you to gain valuable life and work experience, providing a good basis for further qualifications and an introduction to the world of work. These are particularly the skills that employers have said they want from young people

During the course you will study the following topics:-

- You will complete a number of challenges chosen from 12 modules (topics or areas on interest)
- Modules on careers, self development and employment
- Additional ASDAN units may also be offered to widen the range of skills

During the course you will be expected to complete the following:-

There are no examinations

To gain the Certificate of Personal Effectiveness you must:

- Plan, organise and carry out a number of activities (Challenges)
- Develop and provide evidence of working with others, improving your own learning, performance and problem solving, research skills, discussion and presentation
- Produce evidence of your achievements in a Portfolio (file or folder)
- When you have completed **everything** for your Certificate of Personal Effectiveness your portfolio will be checked by your teacher and then marked by the ASDAN External Moderator, who will then recommend that you be issued with the CPE award.

During the course you will be taught in:-

- A small teaching group
- CPE is offered this year in 2 option blocks.
Pupils can opt to follow the course in both blocks.

The examination board for this subject is:-

- ASDAN

There are 2 levels of entry available to you:-

- Level 1 is the equivalent to a GCSE grade D-G
- Level 2 is the equivalent to a GCSE grade C-A*

The assessment for this subject will follow this pattern:-

Type of assessment	Number	% of total marks
Portfolio		100%

If you would like further information about this subject you should talk to:-

- Mrs L Graham _____ (Leaning Support Coordinator)

GCSE ART AND DESIGN

During this course you will have the opportunity to:-

- Acquire a body of knowledge and understanding of Art, Craft and Design, both theoretical and practical
- Experience and develop skills of a practical nature relevant to your work
- Develop an understanding and application of appropriate tools, media and techniques
- Take part in educational visits relating to your assignments

During the course you are likely to cover the following:-

- Drawing, painting and related media
- Textiles - including silk painting, batik and mixed media
- Three - dimensional studies/design including ceramics, sculpture etc...
- Printmaking/graphic design/digital photography
- Critical/ contextual studies - individual research
- ICT - to support research and development of ideas

During the course you will be expected to complete three or four units of work from which a portfolio of work will be selected as final coursework. A unit of work is a clearly defined collection of work based on a theme, demonstrating evidence of initial drawings and development of ideas to a final product. It should involve:-

- Analytical activity - to investigate
- Expressive activity - to explore
- Design activity - to develop, modify and realise ideas
- Critical activity - to research artists/designers/craftspeople, style, genres and cultures

These will all contribute to your final examination grade.

In addition you will be expected to complete homework relevant to your course on a weekly basis. Your homework will help you to build up knowledge and techniques essential for your successful examination performance.

During the course you will be taught in:-

- A mixed ability teaching group

The examination board for this subject is:-

- AQA

The assessment for this subject will follow this pattern:-

Type of assessment	Number	% of total marks
Portfolio of work	1	60%
End of course examination	1	40%
Externally set task		

If you would like further information about this subject you should talk to:-

- Mrs S. Crudgington _____(Director of Art and Design)

BTEC LEVEL 2 EXTENDED CERTIFICATE/DIPLOMA IN ART AND DESIGN

During such a course you will have the opportunity to:-

- Develop the knowledge, understanding and skills from a design practitioner's viewpoint
- Develop own learning, skills and performance
- Working on individual ideas and problem solving
- Work with others as a team, gain in confidence, research and present ideas, involve general creativity
- Work with outside bodies, workshops and education projects
- Exhibit own work and be involved with community arts events

During the course your focus of study will be taken from the following areas:-

- | | | |
|------------------|--------------------|---------------------------|
| • Graphic Design | • Textiles | • 2D and 3D Communication |
| • Photography | • Visual Art | • Vocational Contexts |
| • 3D Design | • 3D Design Crafts | • Fashion |
| • Multimedia | | |

During the course you will be taught in:-

- A mixed ability teaching group but you may at times work in selected groups according to your specialist areas

The examination board for this subject is:-

- Edexcel

According to the amount of time you choose for your study of Art and Design you will be entered for:

*either
BTEC Level 2 Extended Certificate in Arts and Design
or
BTEC Diploma in Arts and Design*

Both the BTEC First Certificate and the BTEC First Diploma are 100% coursework based. During the course you will be expected to complete the following assignments/pieces of coursework:-

BTEC Extended Certificate in Art and Design

Pupils are required to complete a portfolio covering **three** core units and **up to two** specialist unit from a given list of specially chosen areas of study.

Pupils are required to produce ideas/sketch books which will form the basis for assessment of research and development.

BTEC Diploma in Art and Design

Pupils are required to complete a portfolio covering **six** core units and the remaining **two** specialist units of specially chosen areas of study.

Pupils are required to complete ideas/sketch books which will form the basis for assessment of research and development.

*The level of entry available to you in this subject at both Certificate and Diploma level is:-
Level 2 - equivalent to higher GCSE grades A* - C*

NB If you are unable to meet the standards required for level 2, you will be entered for Art and Design modules at level 1 (the equivalent of GCSE grades D - G) or short course GCSE.

If you would like further information about this subject you should talk to:-

- Mrs S. Crudgington _____ (Director of Art and Design)

BTEC LEVEL 2 EXTENDED CERTIFICATE/DIPLOMA IN PERFORMING ARTS

During such a course you will have the opportunity to:-

- Develop a knowledge and understanding of the process of performance
- Develop new performance skills
- Devise and create performance pieces
- Work on stage as a team, gain in confidence, research and present, involve general creativity with all-round fun!
- Work with outside bodies, workshops and education projects
- Perform in talent showcases, concerts, shows, musicals and dance events

During the course you will study the following topics:-

- Dance
- Drama
- Performing arts industries
- Music
- Musical theatre make-up
- DJ skills
- Set, costume and design
- Lighting and sound
- Performing process
- Other aspects of performing arts - jobs, industry, marketing, finance

During the course you will be expected to complete the following units of coursework:-

- **BTEC Level 2 DIPLOMA** - three core units + four specialised units
- **BTEC Level 2 Extended CERTIFICATE** - one core unit + two specialised units

Each unit is delivered through a combination of teacher directed activities, both practical and written, and student directed activities culminating in the completion of an assignment/project/portfolio/case study. Although the course is practically based there is an important written element. This work is often set as homework/project work. There is also an expectation that students will attend extra-curricular rehearsals as and when required.

During this course you will be taught in:-

- A mixed ability teaching group but you may at times work in selected groups according to your specialist areas

The examination board for this subject is:-

- Edexcel level 2 - equivalent to higher GCSE grades A* - C

According to the amount of time you choose for your study in performing arts you will be entered for:-

either
BTEC Level 2 Extended CERTIFICATE IN PERFORMING ARTS (equivalent to two GCSEs)
or
BTEC DIPLOMA IN PERFORMING ARTS (equivalent to 4 GCSEs)

BOTH COURSES ARE 100% COURSEWORK BASED

If you would like further information about this subject you should talk to:-

- Mr D. Branch _____(Director of Performing Arts)

GCSE MUSIC

During this course you will have the opportunity to:-

- Develop your all round musical ability, particularly as a performer and composer.
- Take your skills and levels of understanding of music to a new level.
- Expand further on your own areas of musical interest as well as finding out about lots of other new and exciting ones.
- Listen to and evaluate the progress of your own performance work and that of others.
- Take part in lots of exciting performance opportunities during the year and have fun!

During the course you will study the following topics:-

- Area of Study 1 - My music (spotlight on your own instrument)
- Area of Study 2 - Shared music (musical relationships and roles)
- Area of Study 3 - Dance music
- Area of Study 4 - Descriptive music

During the course you will be expected to complete the following pieces of coursework:-

- Integrated tasks - A performance, a composition and commentary all from Area of Study 1
- Practical Portfolio - A second performance or realisation, a second composition and a log book
- Creative task - A practical examination based on all areas of study where you develop a short piece from a choice of given stimulus
- Listening examination - Assessing knowledge learnt from Area of Study 2, 3 and 4

These will all contribute to your final examination grade.

In addition you will be expected to complete homework relevant to your course of study on a regular basis. Your homework will help you to build up knowledge and techniques essential for your successful examination performance. Please note that there is an expectation that pupils participate in a departmental extra-curricular group and have some instrumental ability.

During the course you will be taught in:-

- A mixed ability teaching group

The examination board for this subject is:-

- OCR

There is one level of entry available to you

The assessment for this subject will follow this pattern:-

Type of assessment	Assessment Items	% of total marks
Controlled assessments -		
Integrated tasks	Performance (15%)/Composition (10%) Commentary (5%)	30%
Practical portfolio	Group performance (15%)/Composition (10%)/Log book (5%)	30%
End of course examination		
Creative task	Practical examination (45 minutes)	15%
Listening	Examination (up to 90 minutes)	25%

If you would like further information about this subject you should talk to:-

- Mr J. Cain _____ (Director of Music)

BTEC LEVEL 2 FIRST EXTENDED CERTIFICATE/ DIPLOMA IN MUSIC

During this course you will have the opportunity to:-

- Develop your all round ability and knowledge in a broad range of musical areas.
- Develop existing and learn new musical skills such as performing, composing, DJing and studio recording.
- Explore and research a variety of different roles and professions within the music industry.
- Improve your independent research skills and constantly self evaluate your own progress against specific assignment briefs.
- Put on your own Battle of the Bands Concert!

During the course you will study the following topics:-

- Exploration of the music industry
- Technology and techniques involved in creating a musical recording
- Preparation and organisation of a musical product e.g. CD recording or concert
- Individual study and research into an area of music

During the course you will be expected to complete some or all of the following pieces of coursework:-

- Various portfolios in at least six areas of study (e.g. musical performance, DJ techniques etc)
- One multi-track recording - recorded onto CD
- Various presentations about different aspects of the music industry
- One CD or video recording of an instrumental or DJ performance

These will all contribute to your final examination grade.

In addition you will be expected to complete homework relevant to your course of study on a regular basis. Your homework will let you build up knowledge and techniques essential for the completion of successful coursework. Please note that there is an expectation that pupils make a contribution to extra-curricular work in the department.

During the course you will be taught in:-

- A mixed ability teaching group

The examination board for this examination is:-

- Edexcel

According to the amount of time you choose for your study you will be entered for:-

either
BTEC LEVEL 2 Extended Certificate in Music
or
BTEC LEVEL 2 Diploma in Music

BTEC Extended Certificate in Music

Pupils are required to complete two core units and two specialist units from a given list of specially chosen areas of study.

The level of entry available to you in this subject is:-

Level 2 - equivalent to higher GCSE grades A* - C

BTEC First Diploma in Music

Pupils are required to complete three core units and the remaining four specialist units of specially chosen areas of study.

The level of entry available to you in this subject is:-

Level 2 - equivalent to higher GCSE grades A* - C

If you would like further information about this subject you should talk to:-

- Mr J. Cain _____ (Director of Music)

Physical Education and Sport Qualifications.

For pupils who choose to study Physical Education there are two main routes to consider:-

- **GCSE** - Pupils will study the GCSE Physical Education course using the lesson allocation. If time permits pupils may be able to study towards the Sports Leader Award, coaching or officiating awards in this subject (see GCSE course outline).
- **BTEC** - Pupils will study the BTEC Extended Certificate in Sport. This is worth two GCSEs and will be studied using all of the allocated lessons. This course is assignment based and does not have any examinations at the end of the course (see BTEC Extended Certificate course outline). There may also be an opportunity to study the Sports Leader Award. There may be the opportunity to study the BTEC Diploma which is worth 4 GCSE's depending on group size and staff availability.

Pupils thinking of studying "A" Level Physical Education in KS5 should follow the GCSE route. In the GCSE there are two written examinations needing detailed teaching and a thorough revision process by pupils. This offers pupils greater preparation for the demands of "A" Level work in this subject. The GCSE route is for the more academic sporting student.

Pupils thinking of continuing an assignment style of learning in the future at the Friary or at College should follow the BTEC route. Four Units must be successfully completed to pass this course. A career pathway for BTEC students could be studying the BTEC National Diploma in Sport at KS5 [a Level 3 Award].

Students who have always enjoyed or shown great commitment in Physical Education during KS3 should consider studying Physical Education via the BTEC or GCSE routes. A practical ability is required to do well in both courses. These students will still have core Physical Education lessons (a compulsory part of the curriculum at KS4). These examinations are a wise choice for a student thinking of a career in sport.

SPORTS LEADER AWARD .

The Sports Leaders Award (JSLA) is a nationally recognised qualification and is designed to provide a starting point for young people aged 14-16 who want to develop their sports leadership skills.

The aim of the award is to develop generic skills that can be applied to a variety of sporting activities, as well as contributing to the candidate's personal and social education. It is a practical qualification in which candidates demonstrate knowledge and understanding mainly through physical competence rather than written work.

More importantly, the JSLA provides a fun course for young people to participate in and give them an insight into the enjoyment that one can gain through sports leadership.

The course is divided into two modules, both covering the fundamental areas of basic sports leadership:-

Module A:-

- Organisational skills
- Fair play in sport
- Communication skills
- The role of the umpire
- Health and fitness
- Opportunities in sport and recreation

Module B:-

Junior Sports Leader candidates will be required to lead a minimum of 1 hour of sporting or recreational activity, of which they must be sole planner and organiser. Each Sports Leader will receive a Sports Leader Award pack which comprises a log book, a certificate and a badge.

Leadership Experience

This will be gained/achieved either at The Friary, by an involvement in the Inter Form Sports programme, or by an involvement in work with local Primary Schools in conjunction with our School Sports Coordinator, Mrs Callaway. Pupils will help to organise and officiate Sport Festivals and Tournaments.

GCSE PHYSICAL EDUCATION

During this course you will have the opportunity to:-

- Study both the practical and theoretical aspects of physical education
- Develop an understanding of effective and safe physical performance
- Plan, perform, analyse and evaluate physical activities
- Improve knowledge and skills in a range of relevant activities

During the course you will study the following topics:-

- **Unit 1 - An Introduction to Physical Education**
 - The healthy and active body
 - Exercise, and training the body for an active, healthy lifestyle
 - Acquiring movement skills and motivation for involvement in physical activity
 - Opportunities and pathways for involvement in physical activity
- **Unit 2 - Practical Performance**
 - Two practical performances
 - Analysing lifestyle task
 - Coaching and officiating available
- **Unit 3 - Developing Knowledge in Physical Education** (building on knowledge gained in Unit 1)
 - The healthy and active body
 - Exercise, and training the body for an active, healthy lifestyle
 - Acquiring movement skills and motivation for involvement in physical activity
 - Opportunities and pathways for involvement in physical activity
- **Unit 4 - Practical Performance**
 - Two practical performances
 - Analysing performance task focusing on skill improvement
 - Coaching and officiating available

During the course you will be taught in:-

- A mixed ability teaching group and in some cases a mixed gender teaching group

The examination board for this subject is:-

- OCR

The levels of entry available to you in this subject are:-

- Single level of entry to give a GCSE grade of A* - G

The assessment for this subject will follow this pattern:-

UNITS	% of total marks
Unit 1 - Written exam (1 hour)	20%
Unit 2 - Assessment	30%
Unit 3 - Written Exam (1hour)	20%
Unit 4 - Assessment	30%

If you would like further information about this subject you should talk to:-

- Mr B.J. Broad or Mrs C. Clague _____ (Director/Assistant Director of Sport)

BTEC LEVEL 2 EXTENDED CERTIFICATE IN SPORT.

BTEC Extended Certificate in Sport:-

- Is a two year course studying both the practical and theoretical aspects of sport
- Prepares students for employment in their chosen career
- Is a QCA accredited vocational qualification
- Provides the opportunity for Level 3 progression

During the course you will have the opportunity to study the following topics:-

- **Core unit:** Unit 1 - Fitness Testing and Training
- **Specialist units:** Unit 2 Practical Sport
- **Optional units** Unit 4 Anatomy and Physiology of Sport
Unit 7 Planning and Leading Sports Activities

NB - Unit 7 overlaps with the Sports Leader Award which is a recognised award and may be available pupils depending on time and/or pupil demand.

During the course you will be expected to complete the following units of coursework:-

- **Unit 1 - Fitness Testing and Training.**
 1. Know the fitness and training requirements necessary to achieve excellence in a selected sport
 2. Know the lifestyle factors that affect sports training and performance
 3. Be able to assess their own level of fitness
 4. Know the effects of psychological factors on sports training and performance.
 - **Unit 2 - Practical Sport.**
 1. Be able to demonstrate a range of skills, techniques and tactics in selected sports
 2. Know the rules, regulations and scoring systems of selected sports
 3. Know the roles and responsibilities of officials in selected sports
 4. Be able to review sports performance.
 - **Unit 4 - Anatomy and Physiology of Sport.**
 1. Know the structure and function of the skeletal system
 2. Know the structure and function of the muscular system
 3. Know the structure and function of the cardiovascular system
 4. Know the structure and function of the respiratory system.
 - **Unit 7- Planning and Leading Sports Activities.**
 1. Know the skills, qualities and responsibilities associated with successful sports leadership
 2. Be able to plan and lead an activity session
 3. Be able to review their planning and leadership of a sports activity
 4. Be able to assist in the planning and leading of a sports event
 5. Be able to review their planning and leadership of a sports event.
- These units will be presented using computer technology and be your own work. These four units will contribute towards your final examination grade - there is **no** examination at the end of the course. You will be expected to complete homework tasks associated with the chosen units when needed. It is hoped that pupils will participate in extra-curricular sporting events for the Friary School.

During the course you will be taught in:-

- A mixed ability teaching group and in some cases a mixed gender teaching group

The examination board for this subject is:-

- Edexcel

The level of entry available to you in this subject is:-

- Level 2 - equivalent to 2 GCSE grades A* - C

The assessment for this subject will follow this pattern:-

Type of assessment	Number	% of total
Assessment on completion of units	4	100%

There is **NO** end of course examination. Units are marked by Friary staff and moderated outside school at the end of the course.

If you would like further information about this subject you should talk to:-

- Mr B.J Broad or Mrs C. Clague _____ (Director/Assistant Director of Sport)

BTEC LEVEL 2 DIPLOMA IN SPORT.

BTEC Diploma in Sport:-

- Is a two year course studying both the practical and theoretical aspects of sport
- Prepares students for employment in their chosen career
- Is a QCA accredited vocational qualification
- Provides the opportunity for Level 3 progression

Completion of units needed to pass the course.

These units will be presented using computer technology and be your own work. Seven units will contribute towards your final examination grade - there is **no** examination at the end of the course. You will be expected to complete homework tasks associated with the chosen units whenever needed.

It is hoped that pupils will participate in extra-curricular sporting events for the Friary School.

During the course you will be expected to complete work from the following units of coursework:-

- 1 Fitness Testing and Training
- 2 Practical Sport
- 3 Outdoor and Adventurous Activities
- 4 Anatomy and Physiology for Sport
- 5 Injury in Sport
- 6 Sports Development
- 7 Planning and Leading Sports Activities
- 8 Technical Skills and Tactical Awareness for Sport
- 9 Psychology for Sports Performance
- 10 Nutrition for Sports Performance
- 11 Development of Personal Fitness
- 12 Lifestyle and the Sports Performer
- 13 Work Experience in the Sports Industry
- 14 Exercise and Fitness Instruction
- 15 Sport and Leisure Facility Operations
- 16 Leading Outdoor and Adventurous Activities
- 17 Expedition Experience
- 18 Effects of Exercise on the Body Systems
- 19 Business Skills in Sport
- 20 Planning and Running a Sports Event

Units 1, 2 and 4 would be compulsory with another 4 units also studied and completed.

During the course you will be taught in:-

- A mixed ability teaching group and in some cases a mixed gender teaching group

The examination board for this subject is:-

- Edexcel

The level of entry available to you in this subject is:-

- Level 2 - equivalent to 4 GCSE grades A* - C

The assessment for this subject will follow this pattern:-

Type of assessment	Number	% of total
Assessment on completion of units	7	100%

*There is **NO** end of course examination. Units are marked by Friary staff and moderated outside school at the end of the course.*

If you would like further information about this subject you should talk to:-

- Mr B.J Broad or Mrs C. Clague _____ (Director/Assistant Director of Sport)

GENERAL CORE TIME PHYSICAL EDUCATION AND GAMES

During the two compulsory allocated lessons you will have the opportunity to:-

- Develop at least two sports activities in depth during winter
- Study at least one summer sport in depth
- Acquire an understanding of "Personal Exercise Programme" and "Health Related Exercise" Plan, evaluate and analyse your own performance and the performance of others

During the General Physical Education and Games course you will follow a combination of the sports/activities listed below, subject to facilities and staffing resources:-

- Aerobics/Dance/Fitness
- Athletics
- Basketball
- Cricket
- Hockey
- Lacrosse
- Netball
- Rounders
- Rugby
- Soccer
- Squash
- Swimming
- Tennis
- Volleyball

During the course you will be taught in:-

- A mixed ability teaching group during the allocated lessons

If you would like further information about this compulsory subject you should talk to:-

- Mr B.J. Broad or Mrs C. Clague _____ (Director/Assistant Director of Sport).

**PERSONAL, SOCIAL & HEALTH EDUCATION; CAREERS EDUCATION & GUIDANCE;
CITIZENSHIP; ENTERPRISE EDUCATION
(Non-examination)**

The above topics are delivered through a combination of activities across the curriculum, during tutorial time and with collapsed days. Citizenship was also taught as a Short Course GCSE in Year 9.

Through Personal, Social and Health Education you will have the opportunity to:-

- Acquire an insight into health issues including relationships and sexual health
- Be encouraged to follow a healthy lifestyle, through the acquisition of relevant skills and knowledge, enabling you to make informed choices and develop a system of values
- Grow in knowledge of yourself and recognise evidence of your progress
- See areas for development and preferred ways of learning
- Manage time and learning more effectively
- Assess strengths and set realistic targets

Through Citizenship you will have the opportunity to:-

- Begin to see the work of Parliament, the Government and the Courts in making and shaping the law. This also includes a description of the workings of the EU and how it affects us in the UK
- Understand democracy and the electoral process
- See Government responsibility for decision making and the economy
- Learn about the roles and responsibilities of the media
- Investigate what makes a news story and how it is produced as news
- Learn how local government encourages democracy and democratic participation
- Discover how local authorities can represent the identity of the community
- Discover how local government administers local services
- See how consumers' rights are protected in law
- Discover that consumers have responsibilities too
- Discover what it takes to become an "Active Citizen"

Through Careers Education and Guidance you will have the opportunity to:-

- Develop self awareness - of your qualities, attitudes, values, abilities, strength, limitations, potential and needs
- Develop opportunity awareness - in education, employment and career opportunities
- Develop an understanding of job seeking skills and the world of work
- Develop transition skills - the development of qualities and skills which enable you to adjust to and cope with change e.g. self reliance, adaptability, flexibility, decision making and problem solving
- Undertake a period of work experience

Through Enterprise Education you will have the opportunity to:-

- Develop the skills for enterprise activity
- Improve your understanding of economics and business
- Develop your ability to manage financial situations

If you would like further information about this subject you should talk to:-

- Mr P Van Block _____(Subject Leader)

Options Clinic Form

Key Stage 4 Options 2011

Student Name:

Form:.....

I/we would like more information on the following:

Signature:

Daytime contact number:

Approximate times when available:

To be returned to Mr Hackfath by Friday 11th March 2011

A member of staff will contact you as soon as possible after this date.

School Use Only

Notes/Information	
Response by	
Further actions/discussion	