



Remote access to the school network

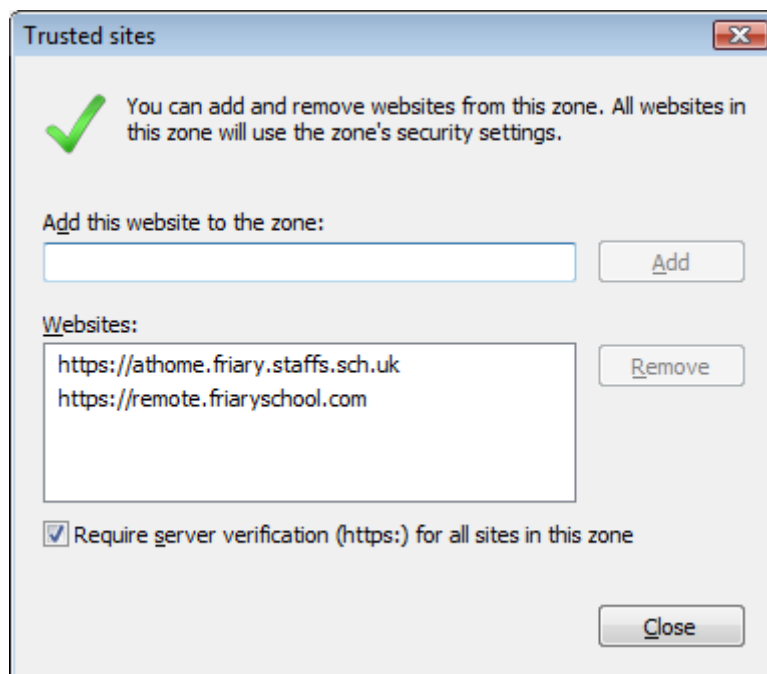
We are pleased to announce the launch of a new system where staff and students can log on to the school network from home and gain access to resources such as the shared drive, SIMS and any specialist applications.

To access the system you need to use the Internet Explorer browser. The remote access portal uses Microsoft technology and other browsers may not work properly.

IMPORTANT NOTE FOR USERS OF INTERNET EXPLORER 7 AND 8

You will need to add our website address to your Trusted Sites in order for it to work

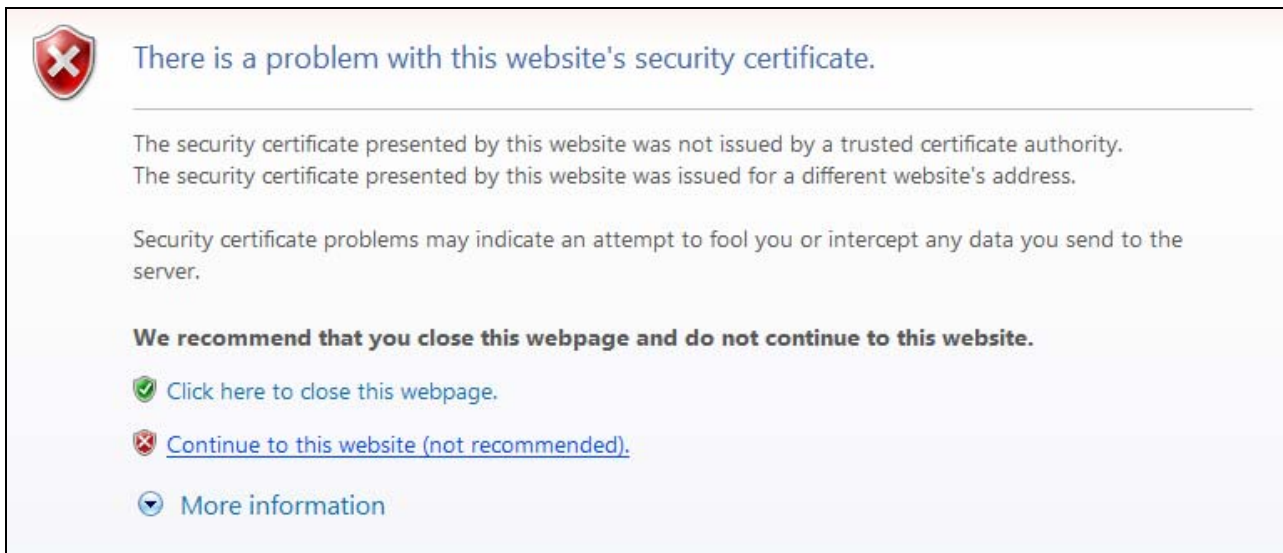
- In Internet Explorer, click on the Tools menu, then select Internet Options
- Click on the Security tab
- Select the 'Trusted sites' green tick icon by clicking on it, then click on the Sites button below
- In the box entitled "Add this website to the zone" type: <https://remote.friaryschool.com> (note the s on [https](https://remote.friaryschool.com)) then click Add
- Repeat as above for the address <https://athome.friary.staffs.sch.uk>



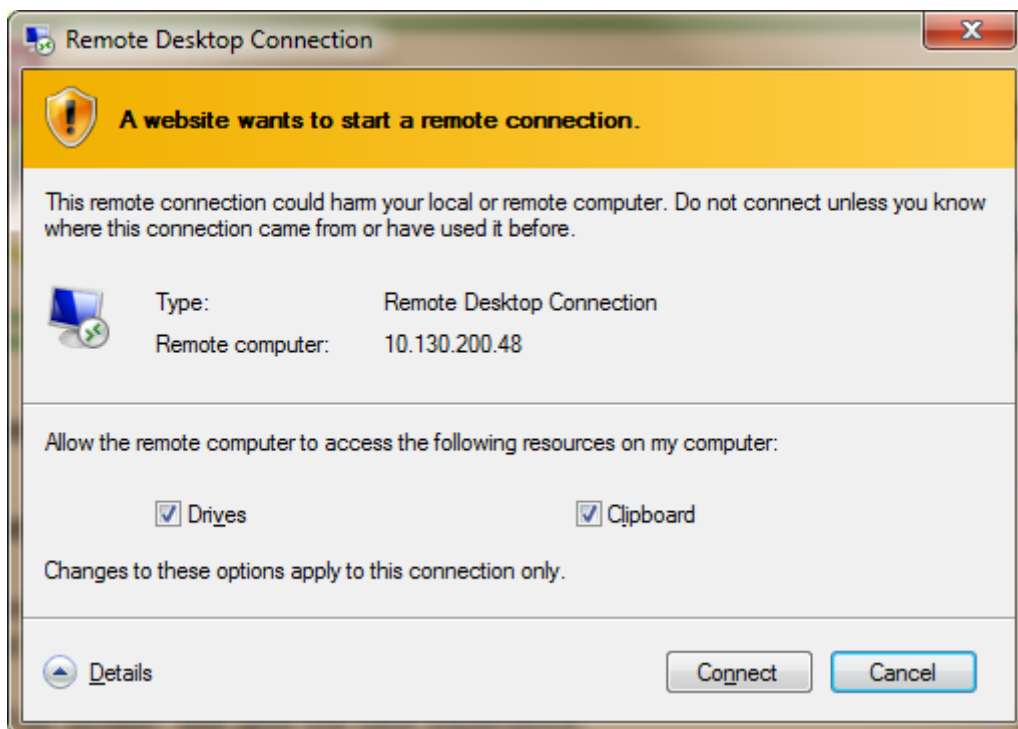
Click Close and then OK on the tab beneath

- Browse to <http://remote.friaryschool.com>

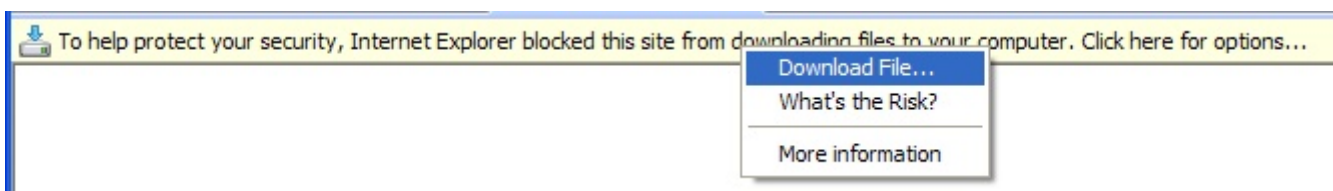
- You may see this security message but it is safe to continue



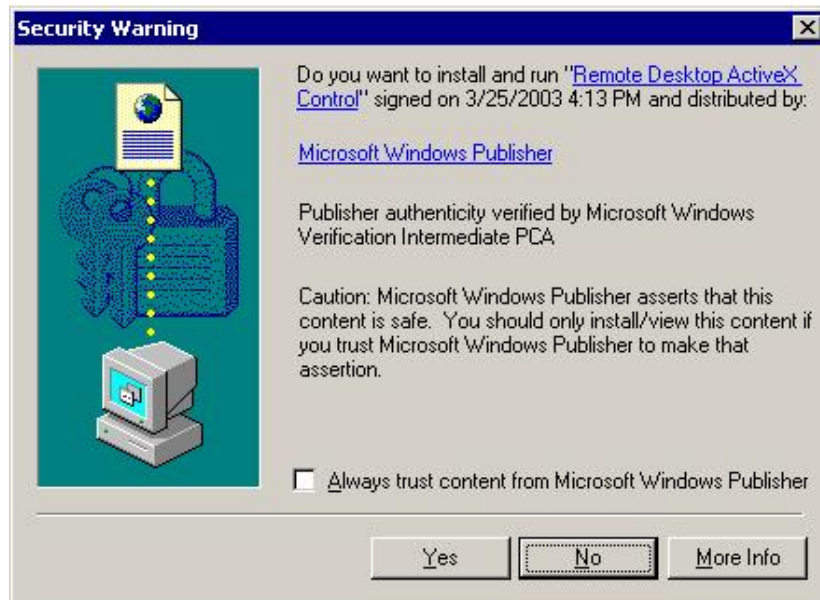
- Enter your network user name and password when prompted
- Read the terms and conditions, then click Yes to proceed
- Select the resolution you would like to use (Full Screen works really well!) and click on the Connect button
- You may see the following warning - just click on Connect



The first time you connect you will download an ActiveX object - you must allow it for remote desktop to work. If you don't get a popup window asking you whether you want to accept the ActiveX object, check the top of your Internet Explorer window.



Right click the bar and select "Download file..." You will then get a pop up window like this:



Click "Yes" to run the component.

- Click Connect to proceed. The message below appears. This is informing you that any local drives on your PC will be connected to the remote session. What this means is that when logged on, under My Computer you will find your own hard drive / flash drive etc alongside your network drive and the shared drives. This makes it easy to copy and paste files between your PC and school.



- You will be presented with the standard network log on screen - enter your network user name and password and log on
- You will then be asked to choose a printer:

Please select a printer from the list below and click the 'Set as Default' button

PDFCreator

\\fri-ps-001\A4 HP Business Inkjet 2300 PCL 5c

\\fri-ps-001\House HP DeskJet 1220C

\\fri-ps-001\Library HP Color LaserJet 2600n

\\fri-ps-001\S6 HP Deskjet 6940

\\fri-ps-001\Staff Room HP Color LaserJet 3600n

\\fri-ps-001\T5 HP Business Inkjet 2300 PCL 5c

\\fri-ps-001\T7 HP DeskJet 1220C

\\fri-ps-001\T8 HP Business Inkjet 2300 PCL 5c

\\fri-ps-001\U11 HP Color LaserJet 2600n

Set as Default

- As you are at home you don't need to select a school printer so either choose any printer or click the red X in the corner to close.
- You should then be logged on. You will have access to SIMS and the shared staff and student drives. Any applications can be installed upon request to the IT support team.
- Remember that your local drives (including memory sticks) will be found in 'My Computer' under 'Other', e.g. 'D on MARK'S HOME PC'.
- Please log off when you have finished.

Updated 9/12/09

MS